



CEVISAMA 2024

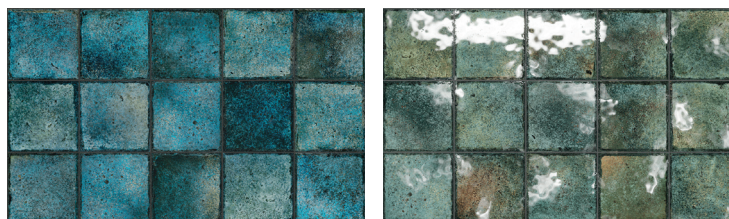
PRESS KIT

CVSM 24

PRESS RELEASE

Cerámica Mayor has created Tropic, the 15x15cm porcelain stoneware that fuses high quality functionality with an aesthetic design inspired by tropical paradises. At Cevisama 2024 Cerámica Mayor presents this series which has been created with lovers of exotic style in mind and offers a ceramic tiling solution in two finishes, matt and gloss, as well as a wide range of special trim pieces, which will transform any aquatic space into an oasis of elegance. Cerámica Mayor announces that “It has been enthusiastically received by architects, designers and homeowners looking to elevate the look of their pools”.

<https://www.ceramicamayor.com/en/collections/tropic/>



But it doesn't end there, Cerámica Mayor launches at Cevisama 2024 its new RJ25 INV, a hidden ceramic drainage grating that perfectly combines aesthetics with the discreet functionality of a hidden swimming pool drainage system. This ceramic design piece offers a clean and elegant aesthetic while maintaining the visual harmony of the environment. Moreover, it is not only visually appealing, but also guarantees the durability and resistance of porcelain stoneware. The new RJ25 INV grille represents a significant advancement among the company's drainage grilles. “We are delighted to offer our customers a solution that not only meets the standards of functionality, but also elevates the aesthetics of their spaces”.

<https://www.ceramicamayor.com/en/swimming-pool-systems/drain-grates/>



NEW LAUNCHES

SAVOY

Sizes:

60x120^R cm

- Thickness 1.02cm
- Indoor C1
- Outdoor C3

90x90^R cm

- Thickness 0.9cm
- Indoor C1
- Outdoor C3

90x90^R 2cm

- Thickness 2cm
- Outdoor C3

Our Savoy collection is an interpretation of the Grigio Venato stone, born at the base of the Alps.

We have carefully selected each block to guarantee its quality and to highlight its characteristic white veins that intertwine harmoniously with its rich background. The subtle transitions between the veined areas and the background bring dynamism. A high quality proposal that adapts perfectly to any decorative style.

Savoy adds the innovative 90x90 format with 2cm thickness, which gives it increased resistance and versatility of placement even in the most unexpected places. The collection is available in an outdoor finish, non-slip C3, and in an indoor finish, C1, thus obtaining a complete project.

Savoy Moon



Savoy Land



Savoy Desert



ICONIC

Sizes:

60x120^R cm

- Thickness 1.02cm
- Indoor C1
- Outdoor C3

120x120^R cm

- Thickness 0.9cm
- Indoor C1
- Outdoor C3

Iconic is born from the Grigio Venato stone at the base of the Alps, maintaining its maximum expression and original strength.

Each carefully selected face highlights the characteristic white veins of the stone intermingled with its rich background. A collection with personality. It makes it an ideal choice among designers/decorators/architects looking for a leading material for their design projects.

Iconic allows the silky finish, C1, in indoors, and the anti-slip finish C3 in outdoors, while it is developed in a wide range of special pieces that allow to give solution to steps, pool edges, ceramic drain grates and trims among others, keeping the colour in all these areas intact.

Iconic Stone



CORALINA

Sizes:

60x120^R cm

- Thickness 1.02cm
- Indoor C1
- Outdoor C3

90x90^R cm

- Thickness 0.9cm
- Indoor C1
- Outdoor C3

60x60^R cm

- Thickness 0.9cm
- Indoor C1
- Outdoor C3

Coraline is a stone native to the Caribbean. It is mostly found along the Dominican coast.

It was formed thousands of years ago from fossil corals and other marine animals that made up the reefs. They were detached from the reef and deposited on the limestone seabeds.

Every graphic detail has been carefully treated, giving the whole, formed by the accumulation of coral fragments and marine remains of varying sizes, an aspect of great identity and naturalness. The Coralina collection is available in two tones: Samaná, its original colour, which ranges from white to cream shades; and Aguada, which offers the option of a neutral tone, with white and bluish shades.

Coralina is fully integrated into the local architectural and sculptural style. Suitable for use in many different environments for Designers/Interiorists/Architects of all sizes thanks to its wide variety of formats and special pieces.

Coralina Aguada



Coralina Samaná



VOLCANIC

Sizes:

14.7x14.7" cm

- Thickness 0.8cm
- Outdoor C3

30x60^R cm

- Thickness 0.9cm
- Outdoor C3

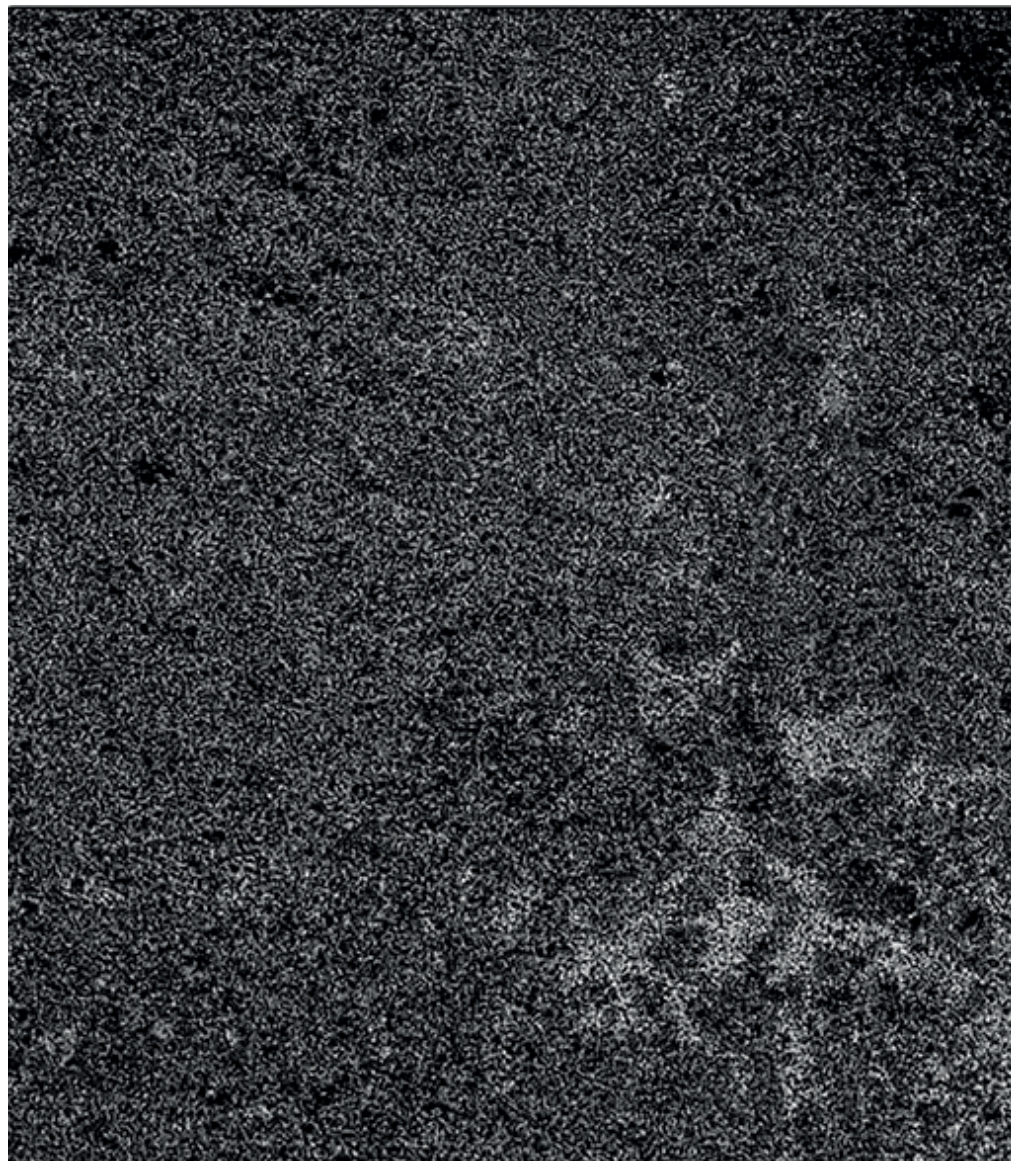
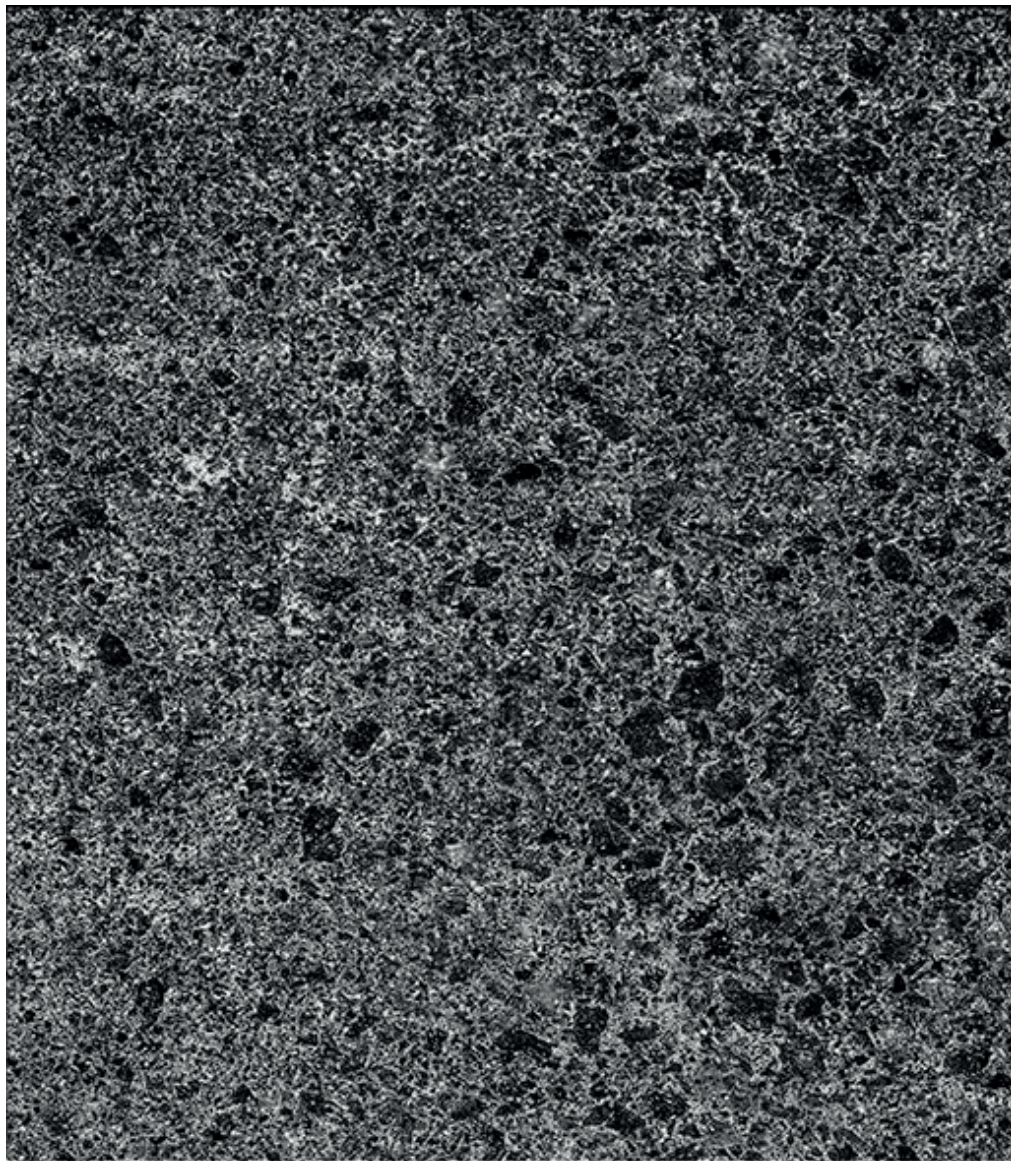
Unique and versatile, the Volcanic series is inspired by the origin of basalt stone, a rock born from the rapid solidification of volcanic lava.

A stone with a characteristic dark appearance, with shades ranging from dark grey to the deepest black. It presents mottled backgrounds, and a very distinctive porous texture.

A look that has been recreated with extensive and environmentally friendly techniques. With all these features, the ensemble creates an atmosphere of elegance and versatility.

With its 14,7x14,7cm, 30x60cm Lava colour and its special trim pieces it allows to tackle projects of all kinds, residential and commercial, that want to generate an ultra-modern style.

Volcanic Lava



DRAIN GRATE RJ25 INV

Sizes:

25x50cm

- Thickness 0.26cm
- Outdoor C3

The new hidden drain grate RJ25 INV by Cerámica Mayor was created with the intention of generating an integrated environment through the same colour of flooring, creating a continuous aesthetic, without visual cuts, which generates an impressive visual effect.

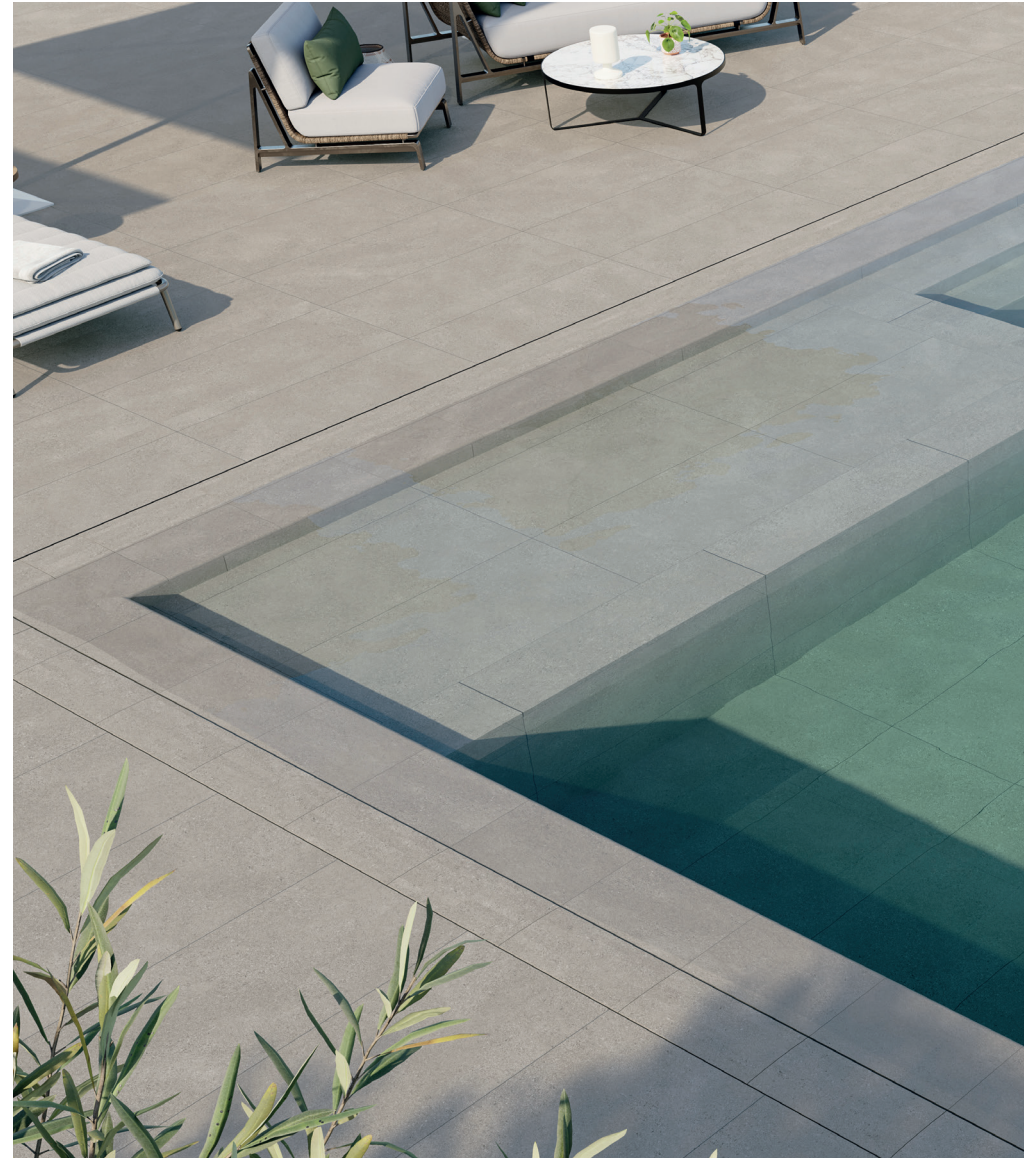
This hidden drain grate is inconspicuous in plain sight, creating a clean, minimalist design with straight, architectural lines and improving safety with its C3 anti-slip finish.

The versatility of its design allows it to be used both as a grating for overflowing pools and as a drainage grating for rainwater, being easy to clean thanks to the low porosity of the porcelain material.

Its structure incorporates a special rubber that produces an anti-shock and noise-free effect, providing excellent cushioning and preventing the material from breaking



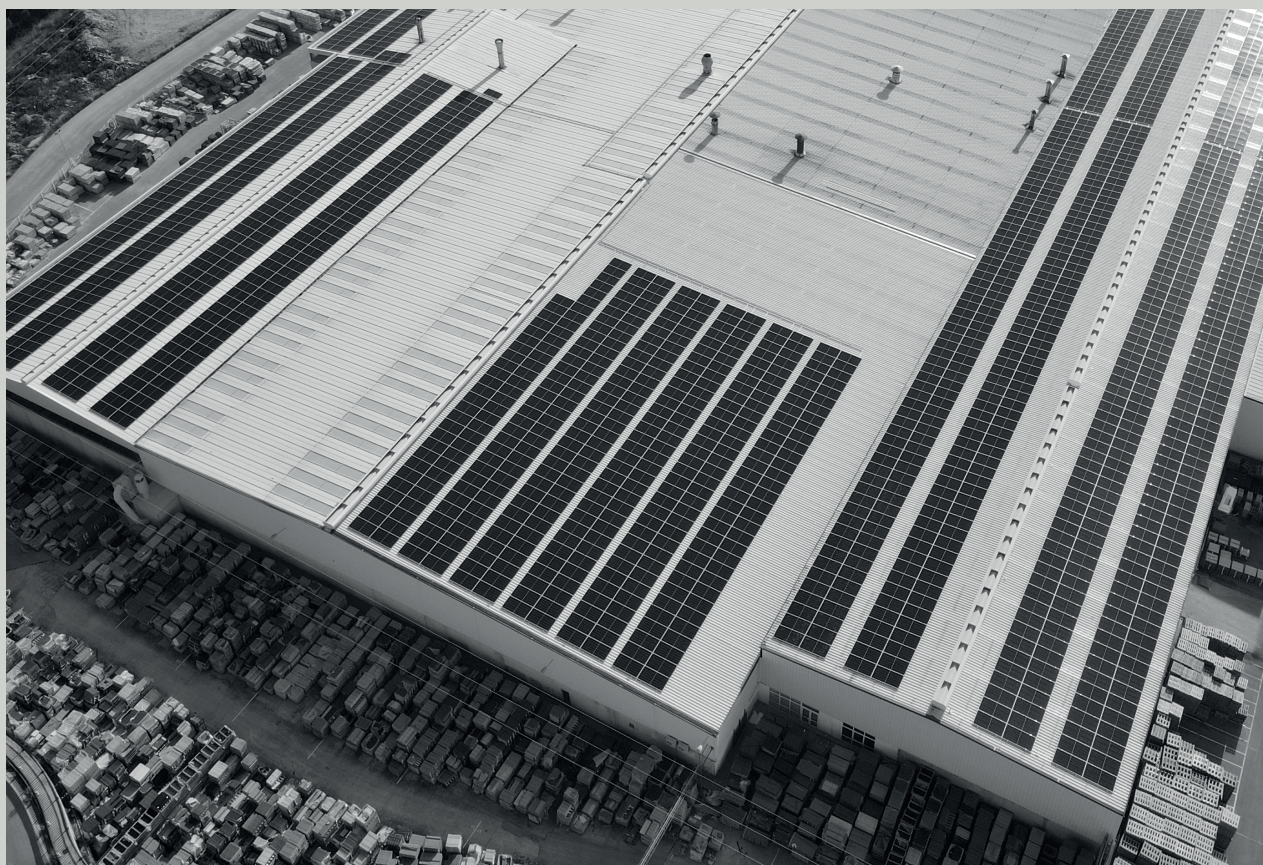
Drain grate RJ25 INV



ABOUT THE COMPANY

Cerámica Mayor S.A. is a leading company in the manufacture of extruded material with a long tradition in the production of flooring and special pieces for swimming pools, terraces and interiors as well as pieces for ventilated façades, which makes use of new technologies, working with professionalism and perseverance to achieve one objective: excellence in its products.

Without losing their traditional character, they have opted for innovation in production processes, facilities adapted to meet the needs of an increasingly professional and demanding market. The R&D team is constantly researching to generate products that offer high-end technical and aesthetic performance.





Conservation and respect for the natural and environmental surroundings are part of the determining factors of its industrial process. The recycled material in the pavement is 50% recycled, 100% of the waste generated is recovered and 100% of the water used in the process is reincorporated, ensuring zero landfill.

Cerámica Mayor is committed to a project for the future that is based on facing the new challenges that the market demands in terms of sustainable architecture. The new way of designing and constructing buildings is undoubtedly to achieve a construction that respects the natural environment and improves the quality of life. They maintain a tireless search for new applications and study of materials which, together with the spirit of the team, make it a highly qualified company to respond to the needs of the bioclimatic architecture of the future.

All images in this document are available at the following link:
<https://mega.nz/folder/Tyg23RjT#b3t6MoS-vHdxi8BwmhQLfA>

Mayor
CERÁMICA

—

CVSM 24